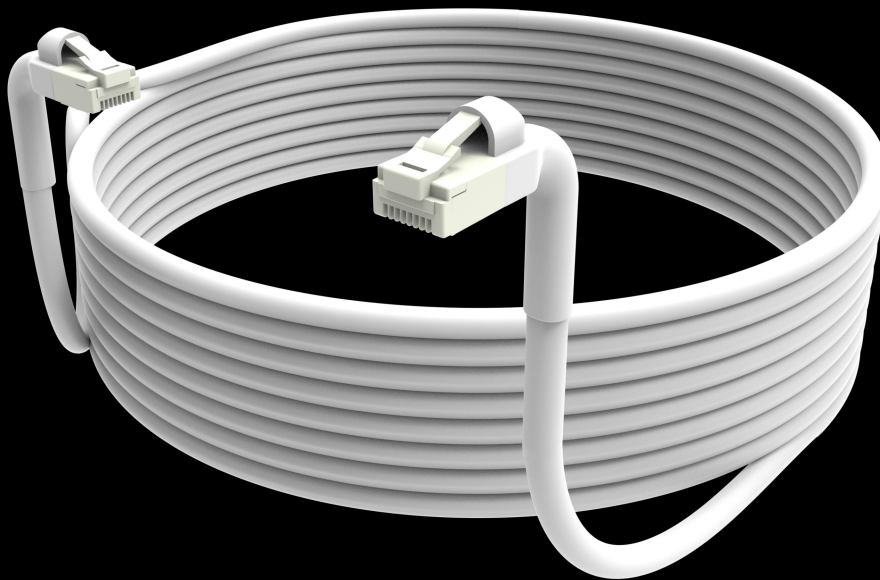


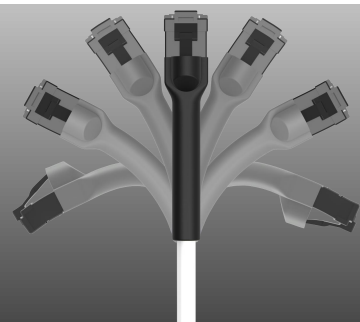
Flex-Boot Bendable CAT.6A U/UTP 28AWG Slim Patch Cable



BCC innovatively develops Flex-Boot RJ45 Patch Cord. This unique Flex-Boot is bendable to meet various angles in all possible application.

The molding Flex-Boot is TPE coated and it can be 360° rotated. It has more advantage than the normal angled connector patch cable. The normal angled only angle one direction.

It can easily cope with the narrow space, prevent the cable from bending, and increase the lifespan.

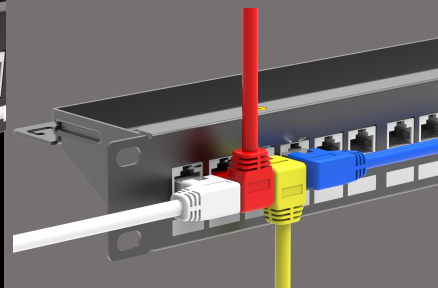


The Flex-Boot is flexible TPE material and it can be easily bended in any angled direction. One cable is equivalent to four regular angled cables.



Flex-boot patch cord

One cable can angled any 90 degree direction



Regular angled patch cord

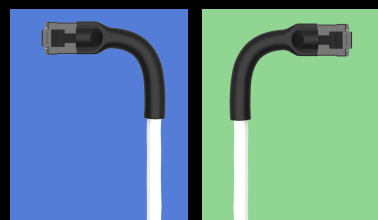
One cable only angled up/down/left/right one direction.



Up

Down

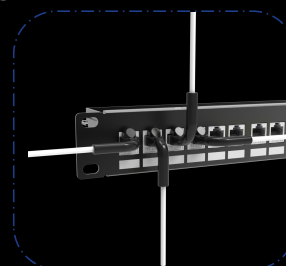
Flexible-boot connector provide versatility in connecting devices with different orientations or port locations through the tightest spaces.



Left

Right

To be continued in next page



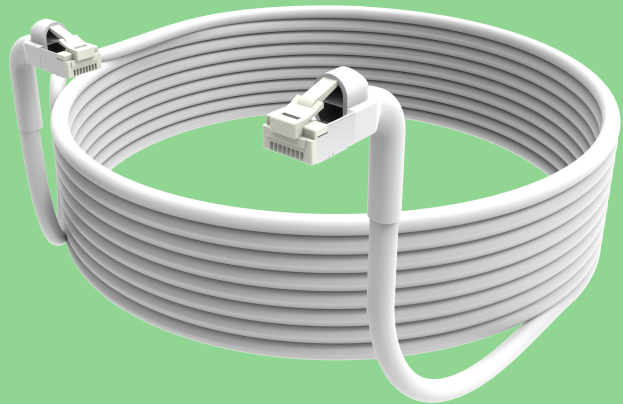
Flex-Boot CAT.6A U/UTP 28AWG

Slim Patch Cable



Product Type	U/UTP CAT.6A Slim Patch Cable
Part Number	102067
Gauge(AWG)	28AWG
Conductor Type	Stranded Bare Copper
Connector Type	RJ45 Plug*2
Connector Gold Plating	50U"
Molded Material	TPE
Cable OD	3.6mm
Fluke Test	DSX8000 Fluke Channel Test
Boot Bending times	over 100 times
Outer Jacket	LSZH

White Flex-Boot



Black Flex-Boot

